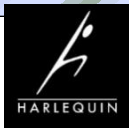


Harlequin Gymnastics Newsletter

1ST EDITION – JAN 2024



Index:

- New Member information.
- Club Membership year 2024-2025
- Fee Increase in April 2024
- Holiday camp dates

CONTACTS

Emails that can be accessed:

harlequingymnasticshome@gmail.com

– Natalie Stringer (Admin & Welfare)

Or

harlequinwelfareteam@gmail.com

(welfare issues) or contact her via
07852237966 or Libby 07817233491

WE DO NOT have a receptionist to answer the phones, send questions via EMAIL and we will answer them as soon as we can.

For EMERGENCIES you can contact Natalie on the above number if you are late for collection.

Harlequin Gymnastics Newsletter

1ST EDITION – JAN 2024

NEW MEMBERS WELCOME TO HARLEQUIN

Parents Information

You should receive a detailed welcome pack with your trial email. Please only attend on the date given in your email, (unless you have a reason to change it) We spread the new starters across the month to assist us and make sure all new gymnasts are settled.

Once your child has attended their trial within 7 days you will receive a 2nd email with a link for the LoveAdmin account which includes setting up the Direct Debit for your fees.

Please read through the welcome letter as this gives all the information you require about setting up. *If you do not receive the set-up link, please email and let us know do not leave it.*

YouTube link on how to set up:

https://youtu.be/uy9K_6BBqHs?list=PLfFu9BH_oxXum9yXHAFa7HvPsLbHpZPuK

Any questions please EMAIL harlequingymnasticshome@gmail.com

CLUB MEMBERSHIP 2024-2025

This is a reminder to ALL parents that your annual club membership is due for renewal on 1st March 2024

The new cost will be £29.50.

The payment will be taken along with your monthly fees. No requirement to do anything.

If you cancel during the month of February, you will be removed and not pay the upcoming payment.

Harlequin Gymnastics Newsletter

1ST EDITION – JAN 2024

FEE INCREASE FOR 2024

This is notification that we will need to increase the cost of the fees for all classes from April.

At Harlequin, we are dedicated to providing exceptional gymnastics classes. Over time, we have continually strived to maintain and increase our class fees at a consistent and slow rate, understanding the importance of affordability for our members. However, after careful consideration and thorough review, we find it necessary to adjust our class fees starting from April 2024. This decision has not been taken lightly and has stemmed from the unavoidable increase in our business, operating, and administrative expenses across the board. We genuinely endeavour to keep our expenses minimised while ensuring top-notch service to everyone. Regrettably, sustaining our current fees has become unfeasible given the rising cost landscape.

I want to assure you that this increase is minimal, reflecting our commitment to you, our members. We believe this adjustment allows us to continue delivering the exceptional experiences you've come to expect from Harlequin.

If your child attends a class for 1-hour per week it will increase from £35.50 to £39.60 per calendar month.

If you attend a 1.5hr class per week your fees will increase from £40.00 to £44.90 per calendar month.

The fees are calculated on a 50-week year as this includes a 2-week shut down for Christmas. Reminder, we do close for bank holidays and we replace these with alternatives sessions, emails are sent out to the affected classes nearer the time.

Your loyalty and support mean the world to us, and we remain steadfast in our commitment to provide affordable and high-quality gymnastics classes to the community.

Harlequin Gymnastics Newsletter

1ST EDITION – JAN 2024

FUNDRAISING

Thank you to those that have donated already.
Pit Socks £2.50 each.

We are still running the fundraiser on our
Events page if you wish to donate.

www.linktr.ee/harlequinsog



HOLIDAY CAMPS 2024

We are up and running the first one of the year's is:

FEBRUARY HALF TERM.

TUESDAY 20TH FEB – FRIDAY 23RD FEB.

LIVE ON LOVEADMIN TO BOOK NOW!!

Harlequin run holiday clubs, following the Central Bedfordshire school's calendar.

Dates for others are currently –

Easter break – Tues 2nd April – Fri 12th April

May half term – Tues 28th – Fri 31st May

Summer – Tues 23rd July – Fri 30th Aug.

Oct half-term – Tues 29th – Fri 1st Nov

Dates should not change; we will inform you if they do so. These will be live on Loveadmin to book 1 month before the start date of the above camp.

Harlequin Gymnastics Newsletter

1ST EDITION – JAN 2024

COMMUNICATION CHANNELS



harlequingymnasticshome@gmail.com

www.harlequingymnastics.co.uk



@harlequinSoG

@harlequingymnasticsclub

@harlequingymsquad @harlequinacro @harlequintumblers

CAR PARKING

OUR FRONT CAR PARK IS FOR STAFF ONLY

We have amended this due to reassessing the safety of the children and all members. Please do not park in front of the gym.

There is a large carpark to the side of the gym which is for all to use. Please be polite to all estate businesses and do your best to not park on their premises or the main road into the estate.

